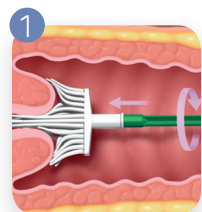




# Cervical Screening Test Collection Guide

## ThinPrep® instructions for cervex sampler

For the majority of pre-menopausal women, it is advisable to use the cervical sampler (broom-like device) alone.



**Obtain** an adequate sample by inserting the central bristles of the brush into the endocervical canal deep enough to allow the shorter bristles to fully contact the ectocervix. Push gently, and rotate the brush 360° in a clockwise direction 5 times in the cervical os.

The use of lubricant can interfere with pathology tests. If lubrication of the speculum is required, please use warm water. If additional lubrication is required, use only a small amount of water-soluble lubricant, avoiding the tip of the speculum.



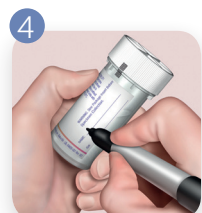
**Vigorously Rinse** the sampler immediately in the vial. The sampler should hit the base of the vial 5-10 times, splaying the bristles open.

**DO NOT LEAVE THE HEAD OF THE SAMPLER IN THE VIAL**



**Tighten** the cap of the vial so that the torque line on the cap passes the torque line on the vial.

**Do not over-tighten.**



**Label** the vial with the patient's given name, surname and date of birth.

**Record** patient details and clinical history on the pathology request form.

**Place** the vial and the request form in a specimen bag for transportation to the laboratory.

ThinPrep® and collection devices can be ordered from SNP Doctor Stores.



ThinPrep® Item 11271

Cervical sampler  
Item 12923

### Further information

As we approach December, 2017, the Australian Government will conduct an extensive education program for all screening stakeholders.

Sullivan Nicolaides Pathology will continue to provide you with periodic updates during 2017, as more details become available. However, should you have any queries please contact our Cytology Department on (07) 3377 8592.

### HPV Testing

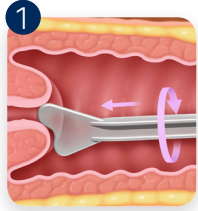
HPV Testing is performed on the same material collected for the ThinPrep® Pap test

## ThinPrep® Pap test cytobrush / spatula protocol

Not indicated for use in pregnancy

### Indications for adding an endocervical brush include:

- > post-menopausal women with non-visible transformation zone
- > post-treatment (loop or cone biopsy) with non-visible transformation zone



**1 Obtain** an adequate sample from the ectocervix using a spatula.

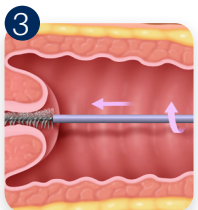
Select the contoured end of the plastic spatula and rotate it 360° in a clockwise direction around the entire ectocervix, while maintaining tight contact with ectocervical surface.

The use of lubricant can interfere with pathology tests. If lubrication of the speculum is required, please use warm water. If additional lubrication is required use only a small amount of water-soluble lubricant, avoiding the tip of the speculum.



**2 Rinse** the spatula immediately into the PreservCyt® Solution vial by swirling the spatula **vigorously** in the vial 10 times. Discard the spatula.

**Do not leave the head of the sampler in the vial.**



**3 Obtain** an adequate sampling from the endocervix using a cytobrush device.

Insert the cytobrush into the endocervical canal until only the bottom-most fibers are exposed. Slowly rotate 1/4 or 1/2 turn in one direction. Do not over-rotate the brush.



**4 Rinse** the cytobrush immediately in the same PreservCyt® Solution vial by rotating the device in the solution 10 times while pushing it against the vial wall. As a final step, swirl the brush **vigorously** to further release material. Discard the brush.



**5 Tighten** the cap so that the torque line on the cap passes the torque line on the vial.

**Do not over-tighten.**



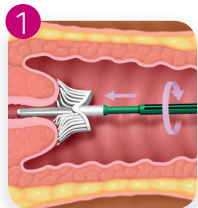
**6 Label** the ThinPrep® vial with the patient's given name, surname and date of birth.

**Record** patient details and clinical history on the pathology request form.



## ThinPrep® Pap Test Rovers® Cervex-Brush® Combi device protocol

Not indicated for use in pregnancy



**1 Obtain** an adequate sample from the cervix using a Rovers® Cervex-Brush® Combi device (broom-like device with an integrated endocervical sampler).

Insert the endocervical sampler part of the device into the endocervical canal deep enough to allow the other bristles to fully contact the ectocervix. Push gently, and rotate the brush 360° in a clockwise direction 2 times.

The use of lubricant can interfere with pathology tests. If lubrication of the speculum is required, please use warm water. If additional lubrication is required use only a small amount of water-soluble lubricant, avoiding the tip of the speculum.



**2 Rinse** the Rovers® Cervex-Brush® Combi device immediately into the PreservCyt® Solution vial by pushing it into the bottom of the vial 10 times, forcing the bristles apart. As a final step, swirl the brush **vigorously** to further release material. Visually inspect the Rovers® Cervex-Brush® Combi device to ensure that no material remains attached. Discard the collection device.

**Do not leave the head of the sampler in the vial.**



**3 Tighten** the cap so that the torque line on the cap passes the torque line on the vial.

**Do not over-tighten.**



**4 Label** the ThinPrep® vial with the patient's given name, surname and date of birth.

**Record** patient details and clinical history on the pathology request form.

